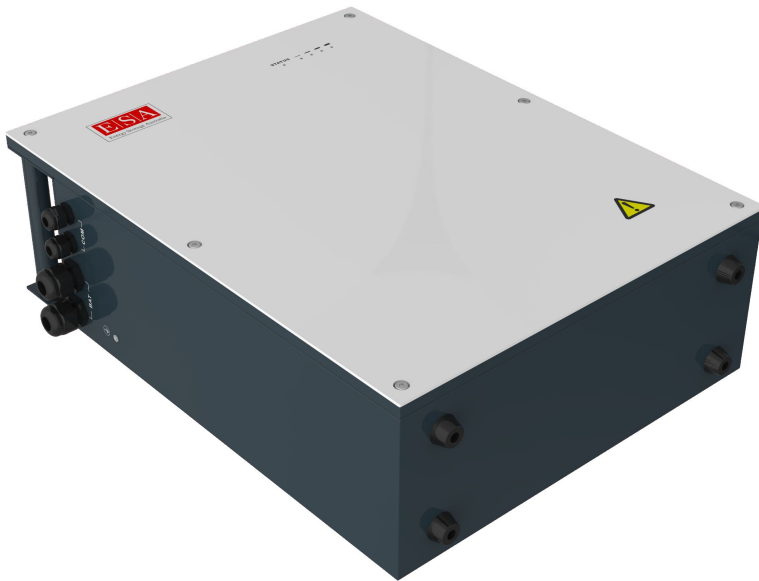


Battery Storage Packs

ESA-BP-8200



-  Compact (480*700*260mm); light weight 74kg
-  Floor/wall mountable - IP65 rated
-  Modular - expandable with large capacity options
-  Chargeable via grid or solar
-  High quality cells (Prismatic Li-ion Battery)
-  Remote control monitoring and output
-  Intelligent BMS -- built into each battery pack
-  2500w discharge / charge rate
-  Superior warranty - 10 years unlimited cycles (based on 90% DOD)



MSDS
Material Safety Data Sheet

UN 38.3

GENERAL INFORMATION:

Battery Module	BAT 8.2
Type of battery	LiFePO4
Nominal Voltage	51.2V
Nominal Capacity (0.2C, 25°C)	161Ah
Design / Usable Capacity	7680Wh / 6900Wh
Depth of Discharge	90%
Continual Charging Current/Power	80A / 3000W Max .
Continual Discharging Current/Power	80A / 3000W Max.
Operating Temperature	Charge 0°C~45°C
IP Rating	IP65
Communication Interface	RS485/MODBUS
Protection Function	OVP/ OCP/ SCP/ OTP
Operating Voltage Range	44.4V~57.6V