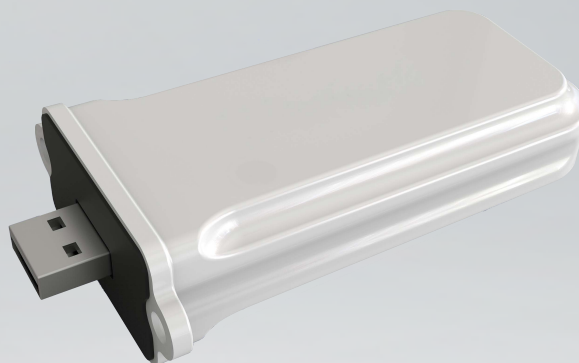


MONITORING



Wi-Fi Module

Wireless Parameters	
Wireless type	802.11.b/g/n
Frequency range	2.412GHz ~ 2.484GHz
Antenna gain	2.5 dBi
WLAN default IP	192.168.10.100
Default server URL	server.lantrun.com
Security	
Security mechanism	WEP/WPA-PSK/WPA2-PSK/WAPI
Encryption	WEP64/WEP128/AES/TKIP
General Data	
Max. communication distance	50m (Cross one wall)
Dimension (W/H/D)	79/135/29 mm
Weight	63 g
Operation temperature	-25°C ~ +55°C
Certification	FCC/CE
Warranty	1 year

GPRS Module

Wireless Parameters	
Port type	USB
SIM card type	Micro
Frequency range	GSM 900 - 1800 MHz
Antenna gain	3.0 dBi
Operation voltage	5 V
Operation current	400 mA
Instantaneous Max. power	< 2 W
Statics power	< 1 W
General Data	
Dimension (W/H/D)	79/135/29 mm
Weight	63 g
Operation temperature	-25°C ~ +55°C
Certification	FCC/CE
Warranty	1 year

SERVER

Solar Monitor System UK China johnyu Setting Help Exit

Plant list WC17180004

- Plant List
 - Khun Gary Tubtai Vill
 - WA16520003
 - ID16520001
 - WC17180001
 - SD17180003
 - WD17210005
 - SD17220002**
 - Khun Jedi Tubtai Villa
 - WA16520001
 - ID16520002
 - WC17180003
 - SD17180002
 - cloudshuahin28
 - WC17180002
 - ID17180001
 - The Clouds Huahin
 - cloudshuahin01
 - WA16520004
 - ID16520003
 - cloudshuahin31
 - WA17010048
 - SD17010028

Overview **Details** **Chart** **Data**

Serial number SD17220002
Alias SD17220002
Device type 5000ES
Firmware version D0.0323 - A0.0331
Status Normal
Battery SN
Battery type Lithium battery
Battery capacity 100 Ah
Working mode Grid-tie mode
Battery percent 100%
Location

 PV power : 155.8 W
 Battery power : 0 W
 Output power : 162.2 W
 Grid power : -1435.2 W
 Load power : 1597 W

Eac Today : 24.3 kWh
 Eac Total : 338.6 kWh

Solar Monitor System UK China johnyu Setting Help Exit

Plant list WC17180004

- Plant List
 - Khun Gary Tubtai Vill
 - WA16520003
 - ID16520001
 - WC17180001
 - SD17180003
 - WD17210005
 - SD17220002**
 - Khun Jedi Tubtai Villa
 - WA16520001
 - ID16520002
 - WC17180003
 - SD17180002
 - cloudshuahin28
 - WC17180002
 - ID17180001
 - The Clouds Huahin
 - cloudshuahin01
 - WA16520004
 - ID16520003
 - cloudshuahin31
 - WA17010048
 - SD17010028

Overview **Details** **Chart** **Data**

Day **Month** Year Total < 2017-06 >

Inverter daily energy column chart (SD17220002, 2017-06)

Day	Energy (kWh)
1	0
2	0
3	0
4	0
5	0
6	0
7	0
8	0
9	0
10	0
11	0
12	0
13	0.5
14	25
15	22
16	28
17	27
18	21
19	25
20	22
21	19
22	22
23	20
24	17
25	23
26	19
27	17
28	24
29	0
30	0